

# THE CONTACT

Midway Christian Church (Disciples of Christ)

March 2012

## Church Staff:

**Rev. Heather McColl**

*Minister*

**Joni Angus**

*Secretary*

**Melissa Askew**

*Interim Music Director*

**Dayton Harris**

*Interim Accompanist*

**Jestine Johnson**

*Custodian*

## Sunday Worship

9:30 AM: Sunday School

10:55 AM: Worship

*123 East Bruen Street*

*PO Box 4548*

*Midway, KY 40347*

*859-846-4102*

*Fax: 859-846-9542*

*E-mail:*

*office@midwaychristian.org*

*Visit us on the web:*

*www.midwaychristian.org*

## Lenten Breakfast Series: "Who is My Neighbor?"

- March 10th:** Neighbor: Northside Elementary School  
 Speaker: Linda Tilghman, School Resource Officer and Ryan Asher, Principal  
 Food by: Flock 3
- March 17th:** Neighbor: Versailles Police Department  
 Speaker: Jimmy Fugate, Assistant Chief  
 Food by: Flock 4
- March 24th:** Neighbor: Al-Anon (Midway Christian Church)  
 Speaker: Sheila Redmond, Coordinator  
 Food by: Flock 2
- March 31st:** Neighbor: Midway City Government  
 Speaker: Tom Bozarth, Mayor and Midway City Council  
 Food by: Flock 1



**When & Where:** **Saturdays at 9:00 a.m.**  
 Midway Christian Church Fellowship Hall

## It's Kaylee's 1st Birthday Party! - Saturday, March 17th 2-4 p.m.

RSVP to Melissa at [melissa.askew@gmail.com](mailto:melissa.askew@gmail.com) or 859-699-1349 by March 3rd if you can join the celebration at the MCC Fellowship Hall for Kaylee's 1st birthday party. Kaylee has been one very blessed little girl her first year of life. Because of this, Melissa and John are asking that instead of gifts, donations be made to the Heifer Int'l Ark Project. Checks can be made to MCC with "Heifer Ark" in the memo line. For more information, visit [www.heifer.org](http://www.heifer.org).



### REMEMBER?



Set Your Clocks Ahead!



Before you go to bed on **Saturday, March 10<sup>th</sup>!**

## Budget Update

**Budgeted to date: \$102,714.56**  
**Received to date: \$100,926.30**

## Worship News and Notes

### Worship Themes

*You are encouraged to read the text for the day in advance*



#### March 4

*Second Sunday in Lent*

Scripture: Luke 10: 1-12

Sermon: "Listening and Praying"

#### March 11

*Third Sunday in Lent*

Scripture: Luke 10: 1-12

Sermon: "Relationship"

#### March 18

*Fourth Sunday in Lent*

Scripture: Luke 10: 1-12

Sermon: "Awareness"

#### March 25

*Last Sunday in Lent*

Scripture: Luke 10: 1-12

Sermon: "Stability"

### HANDBELL PRACTICE



For Easter Music

will be on Wednesdays at 6:00 p.m.

### Serving This Month

**Elders:** Etta Manor & Jack Morgan

**Deacons:** Tom Arehart, Dottie Pollard, Gretchen Portwood, Charlann Wombles, Carole Munson, Jim Nance, Margaret Easton, Ouita Michel, Beth Thompson, & Sandy Gruzesky

**Junior Deacons:** Franklin Watson, Jordan Batts, & Nate Hill

#### Worship Leaders:

**March 4** Janet Mullins

**March 11** Nancy Dare

**March 18** Adele Dickerson

**March 25** Carole Munson

### Sunday School

Our world is changing. We live in a country that has become more diverse than any other time in our history, politically, religiously, culturally, socially. We know that demographic shifts are a consistent reality of life in our world and that our neighbors are likely to be from diverse ethnic and religious backgrounds. As our communities change, how do we become the neighbors Christ calls us to be?

That is why beginning on Sunday, March 4<sup>th</sup>, we will be taking a look at just exactly "Who is our Neighbor?" for our Sunday School time during Lent. As we discuss Kingdom Living, there is no way that we would be able to talk about the Kingdom of God without talking about how we are called to live in community with people who think and act like us as well as with people who don't. For this study, we will be taking a look at current events and discussing various Scriptures that challenge us to really think - just exactly who is our neighbor?

Sunday School starts at 9:30 a.m. with joys and concerns.



### Acolyte Schedule

**March 4** - Willa Michel & Alex Woodruff

**March 11** - Marcus Watson & Jack Hill

**March 18** - James Batts & Luke Hill

**March 25** - Willa Michel & Marcus Watson

## A Pastoral Word

### Find Us on Facebook:

Did you know that Midway Christian Church has a facebook page? As social media continues to change and grow, Midway Christian is working on ways to connect with our members and with others who "like" us by creating a virtual ministry of presence.

This ministry of presence helps create a place where we share ideas, build deeper relationships with one another, and can work on a few great theological debates. One of the ways that we can all do this is to find MCC on facebook and join in the dialogue. The wonderful blessings of this new social media era are that it is a reminder that not just the minister should be doing all the talking! We are a priesthood of all believers. We all have a living faith that connects with our everyday lives. We all have had connections with the divine!

For me, as a minister but more importantly for me as a person of faith, I want to know what everyone is thinking, what everyone believes, and what everyone is struggling with in his or her faith. And that is hard to do on a Sunday morning with limited time. But social media has helped us create a space where time doesn't matter. People can post things and then hours later, others can respond.

I have discovered that my better sermons have come about after some dialogue and conversations with other members. Sure, I can read the commentaries, what the experts are saying about a particular passage and develop a sermon but that is not the word for our community. It is not the word of our community. I have discovered that what really helps give me the words to the message for our community are our conversations!

A few weeks ago, I preached what I thought was a good sermon and I realized that it could have been better, especially after a member sent me an email that said "have you thought about this?" And to be honest, no I hadn't! I wish I had gotten the email before I preached! Because the danger in preaching is that it can be all one-sided, where the minister shares what he or she believes, and the congregation is expected to just listen passively.

As we go through the Surfing the Edge process, we have reclaimed that the Spirit of God is among the people of God and God is speaking, and not just to the minister! God is speaking to all of us! God is engaging all of us in experiences of faith. God is challenging all of us to connect our seemingly ordinary everyday lives with the holy. And the amazing part of all this is that when we enter into the conversation, we may discover that we are not that different. Someone else may be thinking the same thing or someone else may help give us the words to name our struggles. We may discover that we are not alone, that we are connected with loving and supportive people who will challenge us to become the people that God created us to be.

So starting March 1st, I will post a theological question on the Midway Christian Facebook page that may pertain to the upcoming sermon. I will try to have this question up by Monday afternoon at the latest and would love everyone's feedback and dialogue.

I also invite our members to post their questions and wonderings on the Midway Christian Facebook page as well. Who knows, the sermons might start writing themselves!



## Surfing the Edge

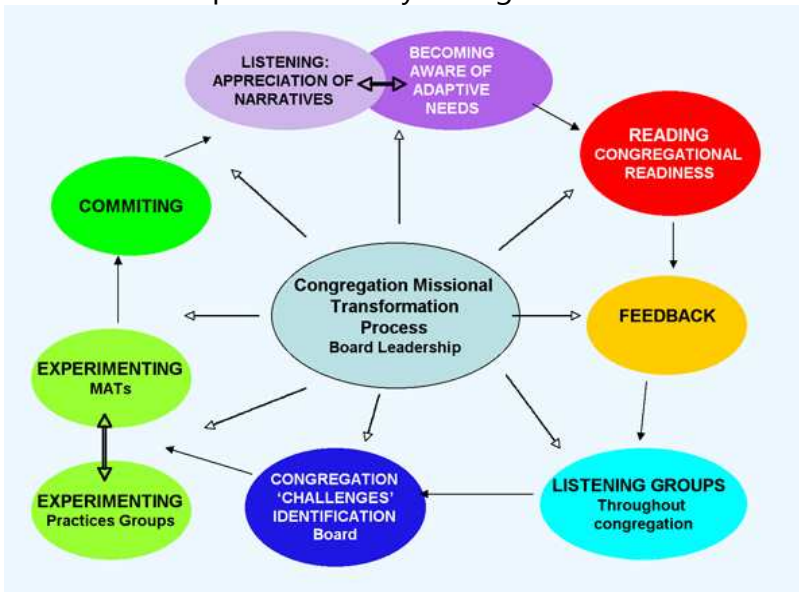


The Guiding Team would like to thank everyone for their continued support for the Surfing the Edge process! Our gathering on Saturday February 11th was a great success! Thank you to everyone who brought items for lunch and thank you to Phil Burchell for the wonderful chicken noodle soup.

We continue with our process by beginning to meet with our Listening Groups. The purpose of our Listening Groups is to get beneath the surface of our 360 report and really dialogue with one another about what we think might be going on in our church and community. This will be a couple of months' process.

The most important element of the listening process in the groups is to examine together the report pages to identify differences, agreement or patterns. We want to create dialogue for what all of this means for the readiness of Midway Christian to engage in missional change.

If you would like to be a part of a listening group, please contact Sheri Adkins. She will get you connected to one of our groups.



## Memorials

### *In Christian Sympathy...*

We would like to extend our prayers to the family of Lily Mae Wright. Lily Mae passed away on February 16th, 2011, at age 87.

Cards may be sent to:

Mr. & Mrs. Buddy Johnson  
228 W Stephens Street  
Midway, KY 40347

Larry and Donna Wright  
3700 River Road  
Richmond, KY 40475



Memorial contributions are suggested to the Lily Mae Wright Memorial Fund, Midway Christian Church, PO Box 4548, Midway, KY 40347.

## Coming Events

### **Lenten Study - Tuesdays at 6:30 p.m.**

Beginning on Tuesday, February 28th at 6:30 p.m., everyone is invited to participate in our Lenten Study. We will be reading the book, "Wisdom Distilled from the Daily: Living the Rule of St. Benedict Today." (\$11)

### **Mark Your Calendars:**

#### **Maundy Thursday Service**

7 p.m., April 5th at Midway Christian Church

#### **Good Friday Service**

7 p.m., April 6th at Midway Baptist Church

#### **Easter Sunrise Service**

7 a.m., April 8th at Walter Bradley Park  
(Rain location to be announced later)

## Fellowship News and Notes

### Keenagers Lunch Trip

**Thursday, March 15th @ 10:45 a.m.**

The Keenagers and friends will travel to the Hartland Shopping Center in Lexington to have lunch with an Irish flair at **Shamrock's Bar & Grille**. Wear your Irish green (unless you need to wear Wildcat Blue for the NCAA). **Meet at the church by 10:45** to carpool to arrive at Shamrock's by 11:30. (It will be BUSY if there's a NCAA game at noon).



### Disciples Women

**Sunday, March 11th @ 12:30 p.m.**

The Disciples Women will meet on Sunday, March 11th (note change of date) for a luncheon and Ron Gruzesky's presentation on the military response to human trafficking. Anyone interested in this topic is welcome to attend. **Please bring sandwiches, salad, or cookies to share.**



### Board Meeting - Sunday, March 4th @ noon

All elders, deacons, and committee chairs are encouraged to attend Board Meetings.



Healthy, individually-wrapped snacks are still needed for Girls on the Run at Northside!



### Keep Valuables Safe at Church

Sadly, there have been a few incidents of theft at our church. Members who have left their coats and purses in the Fellowship Hall while attending church in the Sanctuary have had things stolen. Please keep your valuables with you at all times!

## Community News and Notes

### Free Community Dinner



We are asking all who would like to help out with this ministry to please arrive by 4:00 p.m. to help cook and set up. If you have any questions, please call Heather.

### Community Dinner

**Monday, March 26th  
@ 6:30 p.m.  
MCC Fellowship Hall**

### Volunteer Opportunities for Older Adults



The United Way of the Bluegrass has volunteer opportunities for those aged 55 and older to share their interests, experiences, insights and skills with the youth in our community, to help them succeed in education. Call Tina Murphy at 967-1924 to find out how you can help. Visit [www.uwbgr.org/trailblazers](http://www.uwbgr.org/trailblazers) for more information.

### Friday Night AA/Al-Anon Says Thanks

A nice donation accompanied this note to MCC: "People are changing and lives are being saved because of this meeting, and we have you to thank for a meeting place."



**MIDWAY NEWS ONLINE:** Visit [www.midwaymessenger.org](http://www.midwaymessenger.org) to see the **Midway Messenger**, a news blog about Midway produced by a journalism class at the University of Kentucky.



### WOODFORD FOOD PANTRY DONATIONS AN ON-GOING NEED

Please continue bringing items to the box in the Narthex for the Food Pantry. Any non-perishable foods are appreciated, but they especially need peanut butter, crackers, pasta, and spaghetti sauce. Thank you!

## Youth News and Notes

### Children/Youth Calendar:

- Sunday, March 4th:** **Cook at Hope Center**  
2:00 carpool from church  
5 - 6 p.m. dinner
- Tuesday, March 6th:** **JYF** meets at 6 p.m.
- Tuesday, March 13th:** **JYF** meets at 6 p.m.
- Friday, March 16th:** **St. Patrick's Party**  
7 a.m. to 6 p.m.  
In the Fellowship Hall
- Tuesday, March 20th:** **JYF** meets at 6 p.m.
- Sunday, March 25th:** **Kids in the Kitchen Seder Meal**  
3:30 p.m. prep  
6:00 p.m. dinner
- Monday, March 26th:** **Kids in the Kitchen Free Community Dinner**  
4 p.m. prep  
6:30 p.m. dinner
- Tuesday, March 27th:** **JYF** meets at 6 p.m.

**Spring Break begins April 1st!**



### Dates for Camp Wakon-Da'Ho 2012

Camp	Grade Completed	Dates
Eighters Camp	8th	June 3-9
Junior Camp 1	4th-5 <sup>th</sup>	June 11-15
Camp 101*	1st-2 <sup>nd</sup>	June 16-17
CYF Camp 1	9th-12 <sup>th</sup>	June 18-23
CYF Camp 2	9th-12 <sup>th</sup>	June 25-30
Chi-Rho Camp 1	6th-8 <sup>th</sup>	July 2-7
Chi-Rho Camp 2	6th-8 <sup>th</sup>	July 9-14
Mini Camp	3 <sup>rd</sup>	July 20-22
Junior Camp 2	4th-5 <sup>th</sup>	July 23-28
C/COW ***	Ages 18-29	August 2-5
Yawl Family Camp Weekend**		Aug 31-Sep 2

\*A Parent or Guardian must accompany the camper to this week of camp.

\*\*This is for all families of all ages and make up

\*\*\* This is a camp experience for any Young Adult from 18 to 29.

### Lumber Jack & Jane Weekend

**March 16-18 @ Camp Wakon Da'Ho**

All middle school and high school youth are invited to attend Lumber Jack and Jane Weekend - a Work Weekend with Games and Activities. Cost is \$20. Please tell Heather **by Sunday, March 4th** if you are interested in going.



### Lexington Legends 2012 Faith Night

**Two Nights of Family Fun and Fellowship:**

**Friday, May 11th @ 7:05 p.m.**

**Saturday, June 14th @ 7:05 p.m.**

Special Church Group Discount:  
\$7 Reserve Box Seat Tickets with a minimum of 10 tickets. For more information or to reserve tickets, contact Julie Goldberg at 859-422-7853 or [jgoldberg@lexingtonlegends.com](mailto:jgoldberg@lexingtonlegends.com)



### July 15-20: Camp Wakon-Da'Ho Work & Mission Outreach Week

(Completed grades 6-12<sup>th</sup>)

### Heifer Village Trip Cancelled

Due to a lack of numbers, we had to cancel the middle school Heifer trip. So now, both middle school and high school youth will be attending the Work and Mission Outreach Week at Camp Wakon Da Ho. More information to come!

### Keep Children Off Playground

We're so sorry, but for the safety of your children, please keep them off the MCC playground until the turkey vulture problem is resolved and the playground is sanitized.

Thank you!



## Mission News and Notes

### Meals on Wheels

Many thanks to the Meals on Wheels team that served the week of January 30th: Buddy & Gertrude Johnson, Jim & Charlann Wombles, Pat Wilson, Phil Burchell, & Pat Settlemire. The next deliveries will be the weeks of **Feb. 27th & March 26th.**



### Cooking at the Hope Center

**Sunday, March 4th**

The MCC Youth - **and any adults who would also like to help** - will

cook a meal at the Hope Center in Lexington on Sunday, March 4th. Meet at the church at 2:00 to carpool. Dinner will be from around 5:00 to 6:00.



### March Mission Payment

**Disciples Mission Fund** builds a foundation enabling Disciples to globally share the good news of Jesus Christ. This common fund allows the Disciples to pool their resources accomplishing a greater ministry. One congregation could not achieve this alone. Disciples Mission Fund allows a process of whole church stewardship supporting God-given missions at home and world-wide. They live their theological understanding of Christ's prayer "that they all may be one." As a faithful growing church, Disciples demonstrate true sense of community, deep Christian spirituality, and a passion for justice. (from Disciples Mission Fund website)

### Thank You, from Christian Care Communities

"Thank you so very much for your 5th Sunday gift... You are fulfilling the commandment to "love your brothers and sisters." Bill Schiphorst

### Thank You, from Midway College

We received two very nice thank-you letters: one from President William B. Drake, and one from V.P. for Development, Roy W. Mundy II, for our mission payment in February. They can be viewed on the office bulletin board through March.



## Green Chalice

### The Green Chalice Regional Meeting is Monday, March 5th @ 6 p.m. @ MCC!

Dear Midway Christian Church,  
 "Green Chalice celebrates the fact that you are living out your faith by caring for God's creation and leading the denomination and your community in authentic ways. Green Chalice applauds the fact that you have a green team, have affirmed and signed the Alverna Covenant, and have made changes that help you walk more gently on the Earth. When you are ready for the next step, you can work to become a Certified Green Chalice Congregation, a more extensive program that looks at every area of congregational life from the building and grounds to education and outreach. I look forward to hearing about the new things that Midway Christian Church is doing to save our sacred planet. May your journey be blessed by God."

- Reverend Carol L. Devine, Green Chalice Ministry

### Eco Palms for Palm Sunday

"More than 300 million palm fronds are harvested each year for U.S. consumption alone — most of them for Palm Sunday... MCC congregation's commitment to purchase eco-palms plays an important role in protecting forests, local jobs and sustainable livelihoods in the harvesting communities. Eco-palms are purchased directly from the communities at five to six times the normal payment per frond. Families are able to depend on a more stable source of income and benefit from additional value-added processing that takes place within the community. Purchasing eco-palms for your congregation helps ensure a market for the palms, which in turn means communities can depend on fair and stable wages and the forests can be protected."



- Green Chalice News

## Adult Training, Camps, Retreats...

### Children Worship & Wonder Story Teller Training

**Friday, March 16 from 6:00 to 9:00 p.m.**

**Saturday, March 17 from 9:00 a.m. to 4:00 p.m.**

**Sunday, March 18 from 1:00 p.m. to 4:00 p.m.**

**Bridgeport Christian Church**

**Frankfort, KY**

**\$120 if registered by March 2nd**



You must be at least 18 years old, you must love children, and you must purchase the book Young Children and Worship (\$24.95 - Worship Woodworks) and read at least the introduction prior to the training. More information and registration forms are available on the MCC office bulletin board or on [www.discipleshomemissions.org](http://www.discipleshomemissions.org).

### Kentucky Disciples Women's Ministries - Spring Conference

**Saturday, April 21st @ 9:30 a.m. - Clarion Hotel (former Holiday Inn North) on Newtown Pike**

Rev. Jan Ehrmantraut, Former General Minister of the Christian Church in Kentucky, will be preaching at the Spring Conference in Lexington on April 21st. Registration forms are available on the office bulletin board or at [www.ccinky.net/women](http://www.ccinky.net/women), and the deadline for the \$25 registration fee is April 7th. After the deadline, the fee is \$35.



### Christmount's Week of Wonder Adult Work Camp

**May 27 - June 1 in Black Mountain, NC**

This mission opportunity is for adults to come to Christmount to help prepare the grounds and buildings for the summer. Cost is \$140 which includes meals. A deposit of \$25 is due with registration by the April 30th deadline. Brochures are available on the office bulletin board or [www.christmount.com](http://www.christmount.com).



### Discovery Weekend Women's Retreat

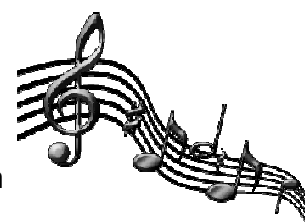
**June 1 - 3 at Christmount, Black Mountain, NC**

This weekend women's retreat is a time of spiritual renewal, relaxation, fellowship, worship, and recreation. The theme of Taste and See will center around **chocolate**. For cost and registration information, see the brochures on the office bulletin board, or visit [www.christmount.com](http://www.christmount.com).

### Christmount Music Workshop

**June 14 - 17 at Christmount, Black Mountain, NC**

Christmount's annual event for church choir members and directors will focus on how to use music in worship in creative ways. There will be choral music, a bell choir, talent sharing, and partnering in worship leadership. For more information, see the brochures on the office bulletin board or visit [www.christmount.com](http://www.christmount.com).





**Midway Christian Church**

123 East Bruen Street

PO Box 4548

Midway, KY 40347

*Return Service Requested*

***Easter Lily Order Form***



Name: \_\_\_\_\_

I would like to order \_\_\_\_ lily(s) at \$10 each for a total of \$ \_\_\_\_\_

In HONOR of: \_\_\_\_\_

\_\_\_\_\_

In MEMORY of: \_\_\_\_\_

\_\_\_\_\_

***Please make checks payable to Midway Christian Church, with  
"Lily" in the memo line.***

***Deadline to order: Sunday, March 25, 2012***